



Congregation Beth Mordecai

Your Jewish Home for the Soul

January/February 2018

Tevet/Sh'vat/Adar 5778



Introduction to Hebrew & the Prayer Book

New for 2018!

1st & 3rd Wednesdays
7pm – 8:30pm
Safran Hall

January 17 – 1st Class

February 7 & 21
March 7 & 21
April 4 & 18
May 2 & 16
June 6 & 20

The goal of this beginner's class is to make synagogue services more meaningful.

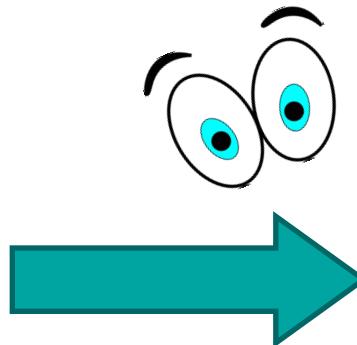
This will be accomplished by both learning the Hebrew alphabet (and practicing by sounding out the text) and by studying individual prayers (and practicing with the translation & transliteration in the prayer book).

Also included will be some songs, a little grammar, a bit of conversational Hebrew and a nosh.

For more information contact Jeremy
(732.331.4049 or straussjer@gmail.com)



A BIG **Thank you!**
to Steve Rutland & his family
for redoing the glass door on the
outside bulletin board on High St.





Congregation Beth Mordecai
Established 1897

Address 224 High St., Perth Amboy, NJ 08861
Office Phone 732.442.1373
Rabbi's Phone 732.442.2431
Office E-mail OfficeBethMordecai@gmail.com
Rabbi's E-mail Rabbi.SaraMetz@gmail.com
Office Hours 10am - 2pm Monday - Thursday
Website http://BethMordecai.org
Facebook (Public) Congregation Beth Mordecai
Facebook (Closed) We Are Beth Mordecai

Synagogue Staff

Rabbi Sara Metz
Executive Director Elliot Rubin

Board of Trustees

President Cheryl August
Vice President Sharon Bender
Treasurer Marc Fertik
Secretary Larissa Sufaru
Past President Alan Roy
Past President Norman Silverstein
Past President Michael Gast
Past President Ron Miskoff
Past President Larry Deutchman
Trustee David Bennett
Trustee Ann Blog
Trustee Nessa Madison
Trustee Steve Rutland
Trustee Stephen Safran
Trustee Louis Sher
Trustee Jeremy Strauss



Acknowledge the Occasion through Beth Mordecai

"Tzedaka is equal in importance to all other commandments combined."
-Talmud

**I am pleased to make a contribution of \$ _____
to the following fund...**

- ☐ **Rabbi's Discretionary Fund**
Allows the rabbi to support special programs and individuals in need.
- ☐ **General Fund**
Applied to the operating budget of the congregation.
- ☐ **Friday Night Oneg Fund**
Used for cookies and other noshes following Friday night services.
A contribution of \$75 supports one oneg.
- ☐ **Shabbat Morning Kiddush Fund**
Used for luncheons and noshes following Saturday morning services.
A contribution of \$125 supports one Kiddush.

...in honor, memory or appreciation of:

My Information:

Name _____
Address _____
Phone _____

**Please send this contribution form and check directly to the synagogue office.
Checks should be made payable to "Congregation Beth Mordecai".**



**Contributions to the above listed funds may
also be made on the synagogue website
through our secure PayPal link.**

*Your generous and thoughtful support of our funds are
used to enrich & invigorate our community.
Todah Rabbah - thanks to you all!*

General Fund Donations

Regina Lowenstein Broten
Lori & Ron Miskoff
Gale Spitalnik

Rabbi's Discretionary Fund Donations

Randee & Glenn Fox
Lori & Ron Miskoff





From the Rabbi

Hanukkah sure was busy at Congregation Beth Mordecai! Thank you so much to our incredible community for helping to plan, organize and attend events such as our Shabbat service, and our Hanukkah pot luck dinner. We brought our Hanukkah spirit to the Menlo Park mall by singing Hanukkah songs, lighting the menorah and giving out dreidels and postcards with our information on them to people in the mall.

The main mitzvah or commandment of Hanukkah is to “publicize the miracle.” Many of us did this in our homes and in our wider community. We have now entered the new year and Hanukkah may seem a distant memory. The day light hours will slowly increase yet the temperatures will not for months. These dark days of winter are the times when we need to join together and remember our miracles.

It is easy to stay in and retreat during the winter months yet if you get your coat on and come over the Congregation Beth Mordecai you will find the miracle of community and the warmth of family and friends who are thrilled to see and meet you.

This winter, dedicate yourself to joining, volunteering or helping to plan any of the incredible events you will find in this bulletin. Along with our special events, join us for our regular Shabbat services on Friday night or Saturday morning. You will find more information about the different kinds of services in this bulletin and on our website.

We are looking forward to seeing you soon!

Happy New Year!

Rabbi Sara Metz



From the President

This is the time of year when getting a minyan for Shabbat is increasingly more difficult. We understand that it is cold and dark early, but there are still those who need to say Kaddish and without a minyan well... you know how this goes. It is disheartening when we are time and time again eight or nine and all we need is ten. So, during this time of year, when we are inclined or even encouraged to make New Year's Resolutions, I'm asking that you resolve to continue to attend or start attending services. Even if it's one Friday or one Saturday a month, to know that we can count on you that third Friday or Second Saturday is a huge and true gift that you can give to this community and those needing to say Kaddish can arrive at shul with the peace of mind that they will be able to fulfill the obligation and honor their loved ones.

Wishing you all a very Healthy and Happy New Year.

Cheryl August



SCHEDULE OF SHABBAT SERVICES

Friday, January 5 - 8:00pm - Traditional Service

Saturday, January 5 - 10:00am - Discussion Shabbat

Enjoy a meaningful discussion in lieu of a Torah service.

Friday, January 12 - 8:00pm - Traditional Service & Special Onea

Traditional services followed by an oneg that will feature the treats made at the previous night's event, "From Bubbe's Kitchen"!

Saturday, January 13 - 10:00am - Discussion Shabbat

Friday, January 19 - 8:00pm - Traditional Service (Lay Led)

Rabbi Metz is out of town, so one of our members will step in for the night. We will learn a new song in preparation for next Shabbat!

Saturday, January 20 - 9:00am - Breakfast Minyan

Bagels and coffee at 9am, sharp! Davening with discussion from 9:30am to 10:30am.

Friday, January 26 - 8:00pm - Shabbat Shira (Song)

Saturday, January 27 - 10:00am - Traditional Torah Service

Friday, February 2 - 8:00pm - Traditional Service

Saturday, February 3 - 9:00am - Breakfast Minyan

Friday, February 9 - 8:00pm - Traditional Service

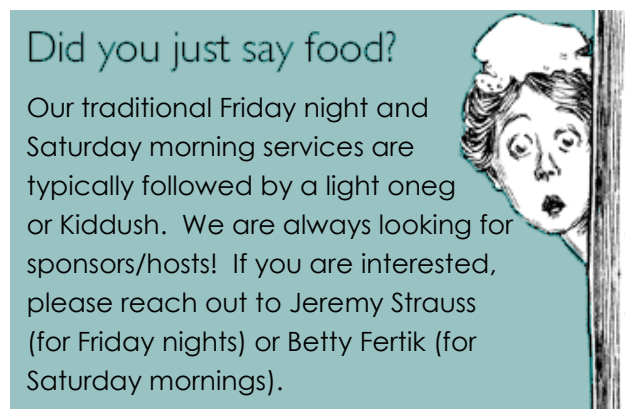
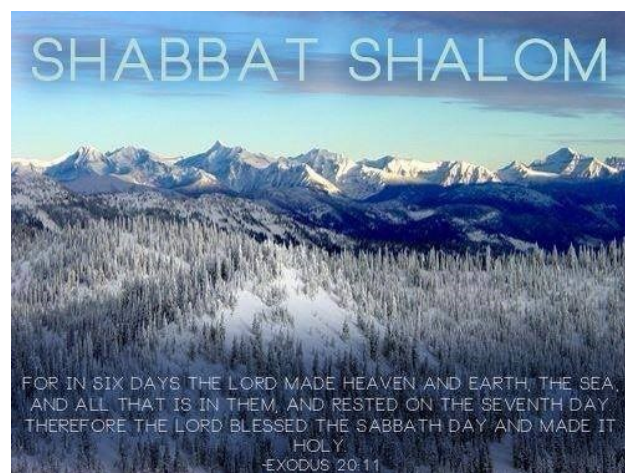
Saturday, February 10 - 10:00am - Discussion Shabbat

Friday, February 16 - 8:00pm - Traditional Service

Saturday, February 17 - 10:00am - Discussion Shabbat

Friday, February 23 - 8:00pm - Traditional Service

Saturday, February 24 - 10:00am - Traditional Torah Service



Jeremy's Info

732.331.4049

straussjer@gmail.com

Betty's Info

732.407.0821

bettymf@me.com

Paint & Sip

*Uncork your creativity with a little paint,
a little wine, and a whole lot of fun!*

SATURDAY, FEBRUARY 3

7PM TO 10PM

BETH MORDECAI'S SAFRAN HALL

\$25 PER PERSON

COST INCLUDES WINE, SNACKS & ALL PAINTING SUPPLIES

RSVP BY MONDAY, JANUARY 29

SPACE IS LIMITED – RESERVATIONS ARE REQUIRED

732.442.1373 OR OFFICEBETHMORDECAI@GMAIL.COM



January 10 & 31

February 14 & 28

12pm

Menlo Park Mall Food Court

Join Rabbi Metz at Menlo Park Mall. Each session will have a topic associated with it - to be announced on the synagogue Facebook page. In addition, ask the rabbi ANY question you wish!

Sing-a-long with Ralph!
Sunday, January 28
10:00am
Beth Mordecai

Love to sing?
 Love the sound of the organ?
 Want to have fun?
 Join us!
 No experience necessary!

Ralph Selig is our fearless leader
 and organ player.

RSVP to the office:
 732.442.1373 or OfficeBethMordecai@gmail.com



FROM BUBBE'S KITCHEN

L'Dor Va'Dor

Join us as we gather in the Beth Mordecai kitchen and make our ,
 share stories and have a nosh.

Special CHALLAH Edition
Sunday, February 11
12:00pm
\$10 Suggested Donation

RSVP to Rabbi Metz by February 5
 (Rabbi.SaraMetz@gmail.com)
 Also, please contact the rabbi if you have a
 family recipe you would like us to make.



The Science of Tasting



In this 3-part series you will learn the science behind tasting wine, chocolate & cheese. Each month, we will break open the flavor and texture of one of these product categories into individual perceivable attributes, such as showing that “cola flavor” is a blend of spices, citrus, caramelized, sweet, sour, and bitter notes. We will practice using a large number of foods. With developed tasting skills, you will be better able to articulate your likes, dislikes & preferences and communicate with others who have a similar passion for food. The series will be taught by Sharon Bender, a Sensory Scientist with 20 years of professional experience in the food industry.

Series

Wine

Chocolate

Cheese

Series Dates

Saturday, February 17 at 7pm

Saturday, March 10 at 7pm

Saturday, March 24 at 7:30pm

RSVP with Payment by:

Monday, February 12

Monday, March 5

Monday, March 19

Cost

\$60 – series

\$25 – individual class

RSVP to:

OfficeBethMordecai@gmail.com

Pay Online [HERE](#) (note this event under “add special instructions”)

amazonsmile
You shop. Amazon gives.

Everyone loves shopping on Amazon! Now, if you shop with Amazon Smile, 0.5% of all your eligible purchases will be donated to Congregation Beth Mordecai! Start today!

Visit smile.amazon.com

Under “Choose Your Charity”, type in “Congregation Beth Mordecai” and click “search”.

On the next page, will be a list of possible matches; select “Congregation Beth Mordecai”.

A confirmation email will be sent.

Begin shopping!

Come out to enjoy this great class & support Rabbi Metz!

JEWISH TEXTS IN POPULAR MUSIC



Many classic and popular singer / songwriters use the Bible and traditional Jewish texts, including Pirke Avot (Ethics of the Fathers) as inspiration for their songs. Come and join this interactive and exciting class filled with music,

discussion and interpretation. We will learn about the songs and the texts from artists ranging from Sting to Louis Armstrong, Bob Marley and Pete Seeger. We'll discuss the lyrics and their meanings, their connection to biblical texts and the times in which they were written.

Rabbi Sara Metz grew up in North Haven, Connecticut, and graduated with a BA in American Studies and Near East and Judaic Studies from Brandeis University. She received rabbinic ordination from The Ziegler School of Rabbinic Studies and master's degrees in Jewish Education and Rabbinic Studies at the American Jewish University. She has participated in Clinical Pastoral Education at UCLA Medical Center, an interfaith pastoral education training and internship, meeting with patients offering comfort and presence during times of illness. Rabbi Metz was also selected to participate as Fellow with Jewish, Muslim and Christian seminary students as part of the Fellowship at Auschwitz for the Study of Professional Ethics to discuss lessons about the Holocaust on modern professional ethics and practical theology.



Rabbi Sara Metz is the rabbi of Congregation Beth Mordecai, an inclusive, warm and welcoming community in Perth Amboy, NJ.

DATE: **THURSDAY EVENINGS, FEBRUARY 1, 8 and 15, 2018**
TIME: **7:30 PM**
COST: **FREE AND OPEN TO THE COMMUNITY AS SPACE ALLOWS.**

PRE-REGISTRATION STRONGLY REQUESTED



Jewish Community Center of Middlesex County
 1775 Oak Tree Road
 Edison, New Jersey 08820
 732-494-3232
www.jccmc.org





A Flower Garden called Newtown®

As the sun rose in the east,
The smallest buds perked up,
Ready to start another day,
Of growing and absorbing.

The warmth of the sun
Refreshed them, their
Hidden futures not ready to bloom.
The day had just begun.

The earth awaited their blossoms,
The potential to grow assumed,
But a madman cut the buds off,
And the flower garden died.

An excerpt from "Scrambled Poems from My Heart"
Available at Amazon.com



December Birthdays

Neil Hunter
Larisa Barskaya
Alvin Kravet
Bernard Magier

December Anniversaries

Lisa & Ronald Weiss

January Birthdays

Miriam Hamelburg

February Birthdays

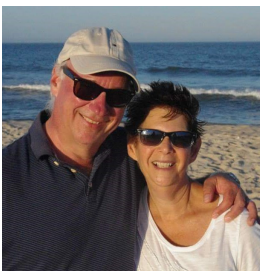
Shirley Levinson
Deborah Adler
David Bennett
Susan Trager
Lori Miskoff
Norman Semel
Dion Roy
Betty Fertik



FACES OF BETH MORDECAI

A member snapshot... in 10 sentences or less!

Anita & Bob Krentar



Bob and I both grew up in NJ (in Elizabeth and Metuchen, respectively). Bob is a Mechanical Engineer and I am a litigation paralegal. We met on a blind date 36 years ago and were married 2 years later. We have 3 children and 4 grandchildren. When our youngest son started Hebrew school at Adath Israel, in Woodbridge, Bob made the decision to convert to Judaism. He took lessons with the rabbi and was a Bar Mitzvah along with our son.

When Adath Israel closed we came to Beth Mordecai. My mother was confirmed here & my parents were married here. My grandmother, Sara Brody, was also active and her name is on the wall in the small sanctuary. You could say we really found our Jewish Home for the Soul.

Through the temple, Bob and I went on an incredible trip to Israel; and with an amazing view from the top of Haifa, we were remarried. Rabbi Zalma officiated and our Beth Mordecai family formed held a tallis over us to form a chuppah. What keeps us at Beth Mordecai is all of the good friends and memories and bonds that we have made throughout our years here.

Our passions are traveling and boating. The last couple of years we have travelled to South Africa, the West Coast, Florida, Alaska, Italy and took a Panama Canal cruise. We have our own boat, named the NeatSea, and that is pretty much where you will find us in the summers.



Flynn and son
FUNERAL HOMES

JAMES J. FLYNN, MANAGER

424 East Ave.
Perth Amboy, NJ 08861
732.826.0358
NJ Lic. No. 4152

BRENDAN J. FLYNN, MANAGER

319 Amboy Ave.	23 Fords Ave.
Metuchen, NJ 08840	Fords, NJ 08863
732.548.2134	732.826.0358
NJ Lic. No. 4105	NJ Lic. No. 2158

A DONATION HAS BEEN MADE TO THE SYNAGOGUE BY:

Robert Arky, in memory of Bertha & Arthur Arky
Lois Berkowitz, in memory of Anna & Edward Berkowitz
Sheila & George Brown, in memory of Abraham Welkis
Martin Clawans, in memory of Sylvia & E. David Clawans
Phil Eichen, in memory of his dear wife, Roslyn Eichen
William & Marcia Goldberger & Family, in memory of Max Goldberger
Mary Kaufman, in memory of Sol Kaufman
Dori Klang, in memory of Morey Shulman
Joan Kossowsky, in memory of Philip Kossowsky
Allan Lesslauer, in memory of Dorothy Lesslauer
Arlene & Seymour Miller, in memory of Louis Wedeen
Arleen Price, in memory of Harold Boerer
Elaine & Gordon Reibman, in memory of Helen Gold Reibman, Gussie Gold & Emil Landau
Lorraine Scheps, in memory of Celia Zelbo
Suzanne Schwartz, in memory of Albert Schwartz
Mike Shevell, in memory of Janice Fishman
Barbra Siperstein, in memory of Mildred & Morris Siperstein
Libby & Allen Weingarten, in memory of Pauline & Samuel Weingarten

MAY THEIR MEMORY BE FOR A BLESSING.



Who Do I Call?

In the case of a death, call a medical authority,
the funeral home and then Beth Mordecai.

Rabbi Sara Metz

732.442.2431 or 732.442.1373 or Rabbi.SaraMetz@gmail.com

